

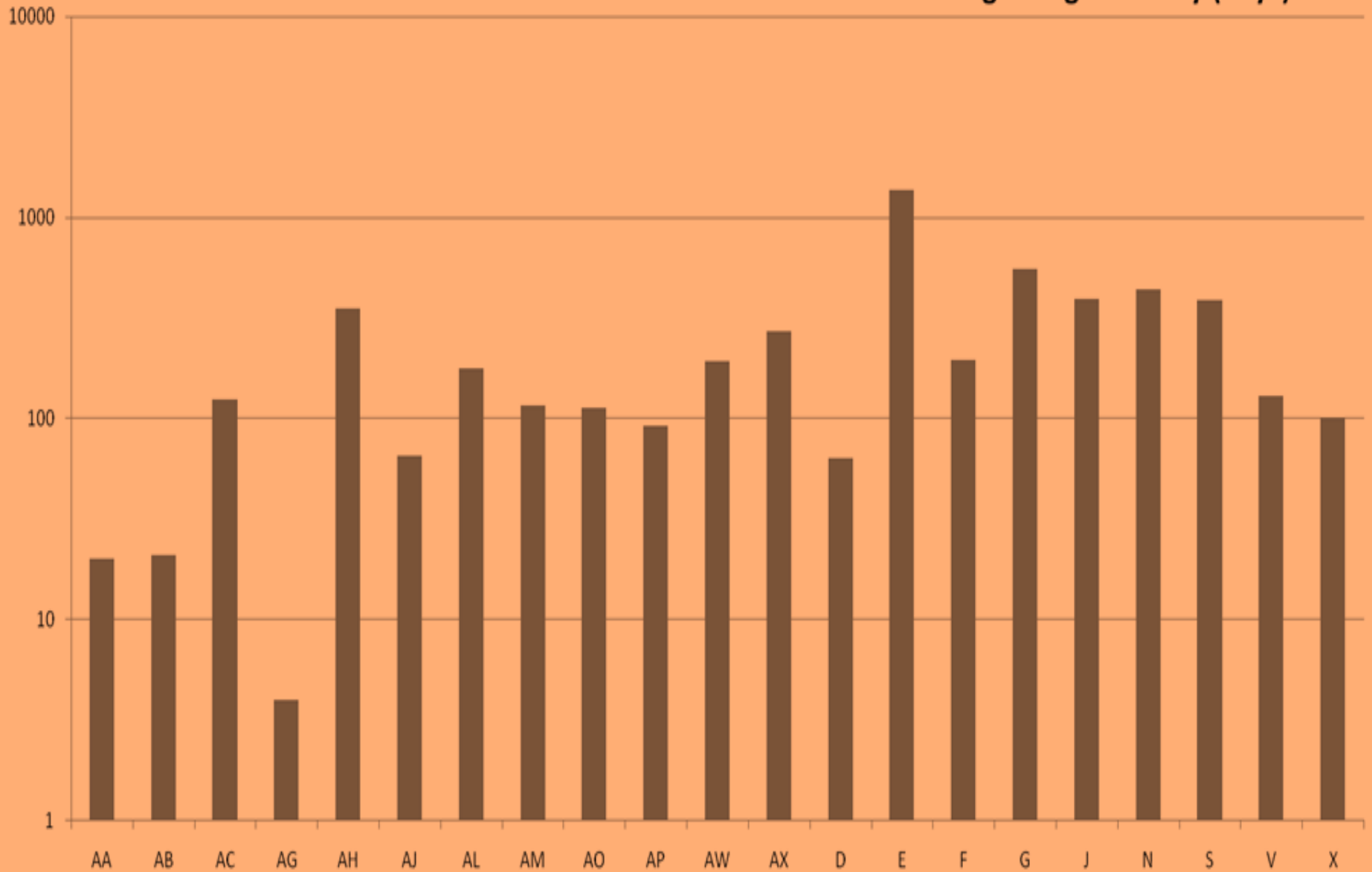
2008 Metrics Data

Onondaga County Department of Mental Health

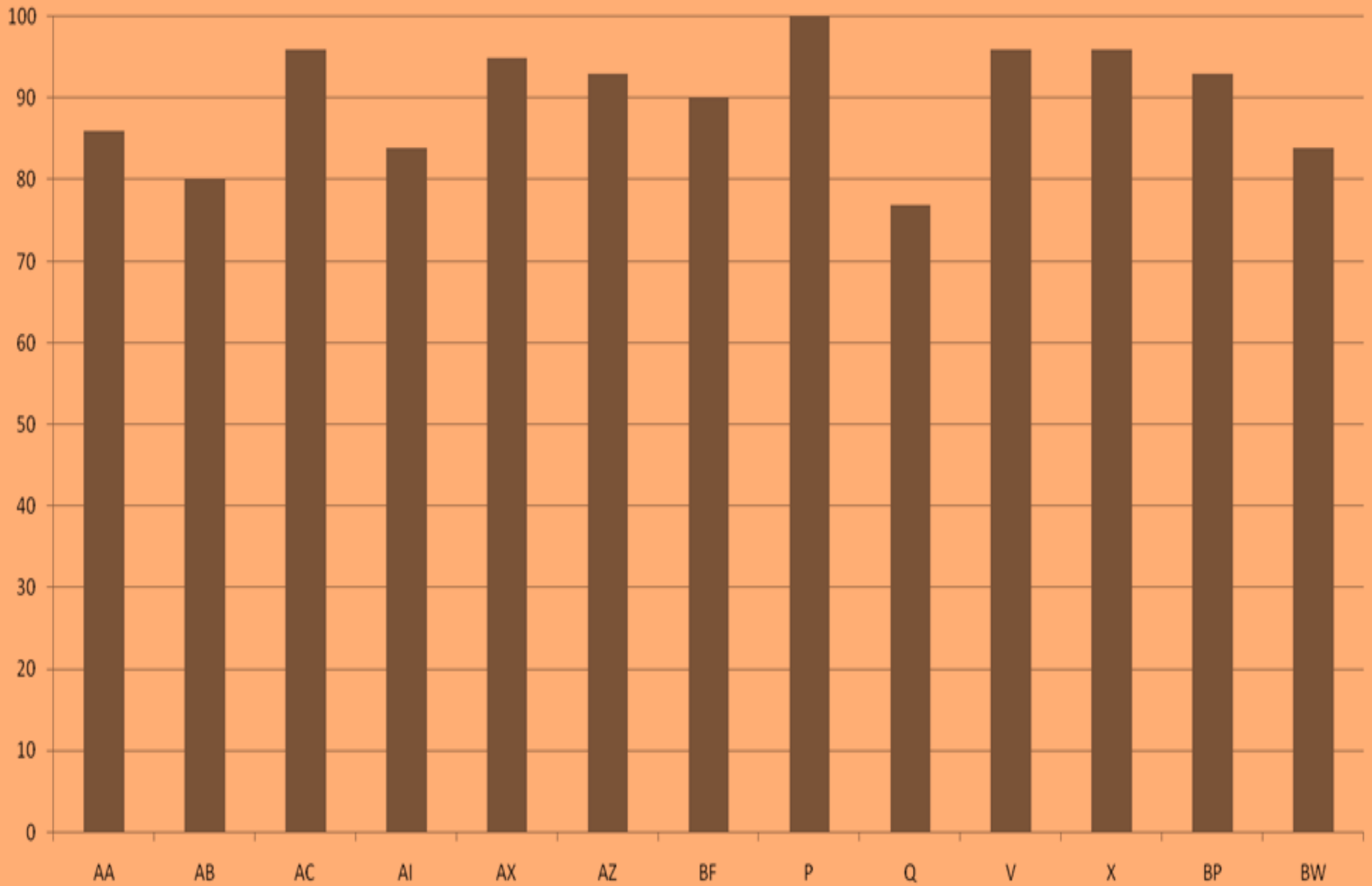
- Metrics reported are from Onondaga County Residential, Case Management, and Clinic providers.
- Because of some inconsistencies in reporting, it was decided not to identify specific provider programs.
- Data was reported either directly to the Department or was mined from internet based data systems (i.e. PCS, CDS).
- Metrics chosen were based on provider input and the National Outcomes Measures (NOMS).

Explanation

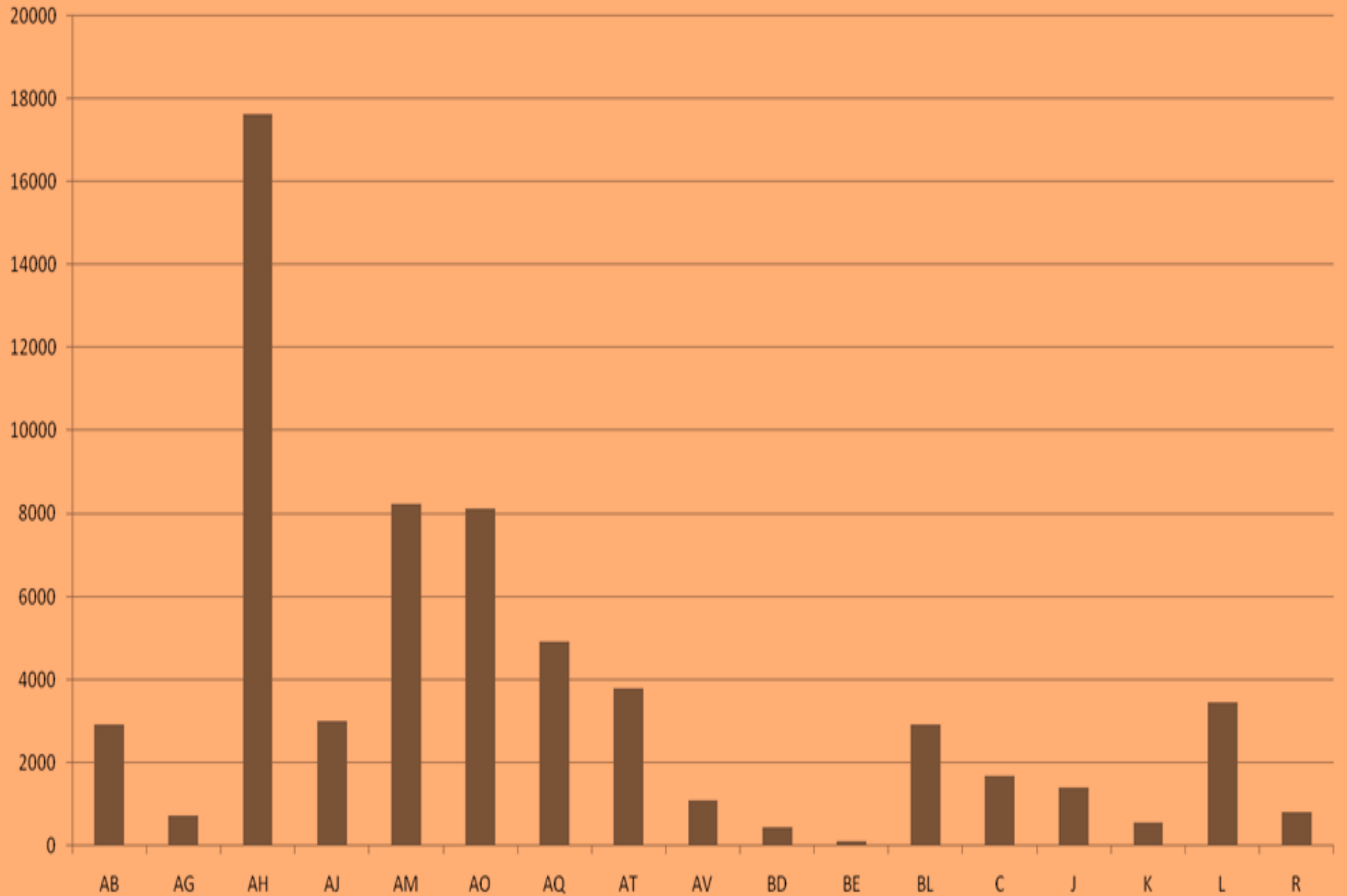
Average Length of Stay (days)



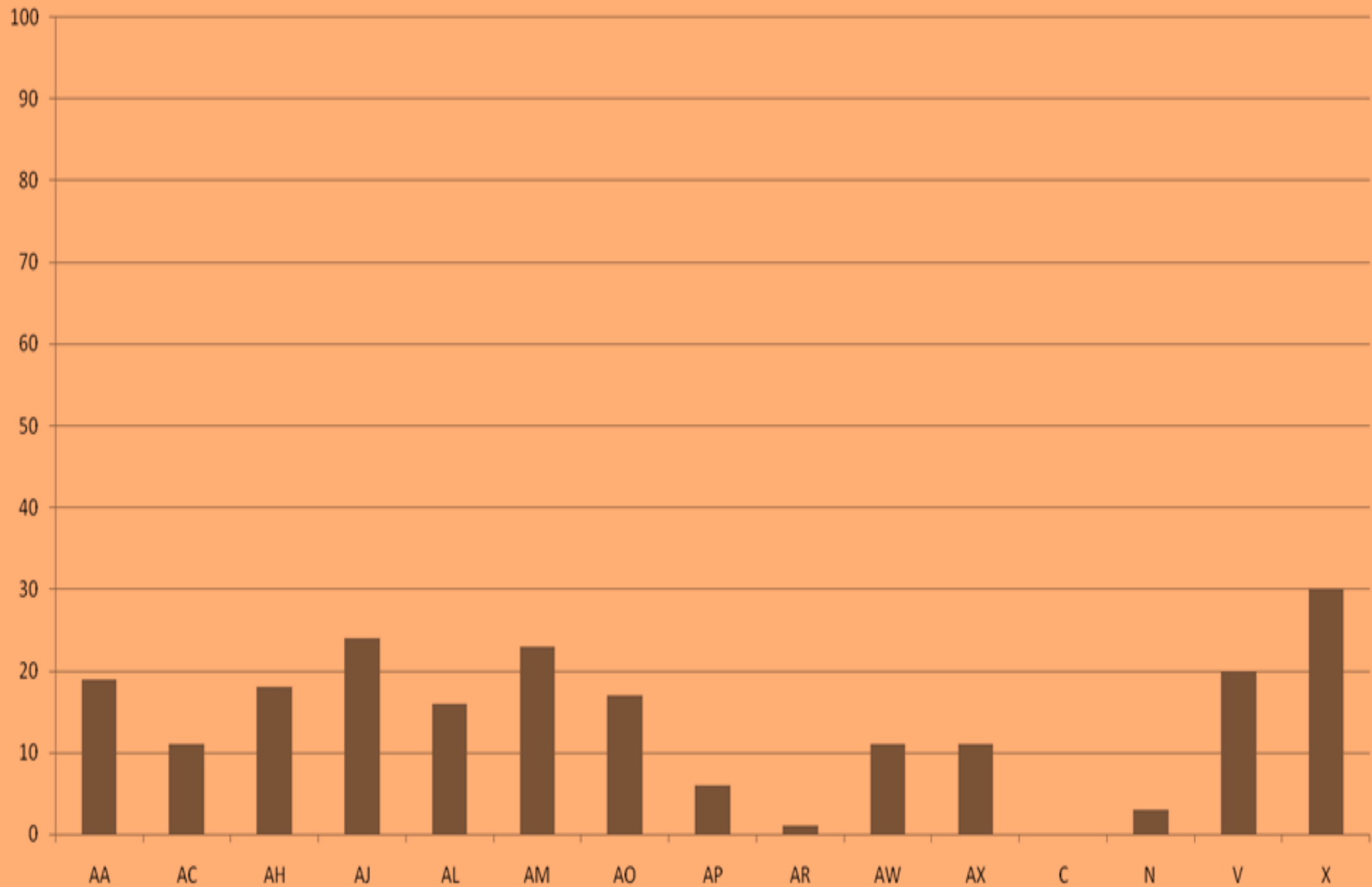
% Occupancy



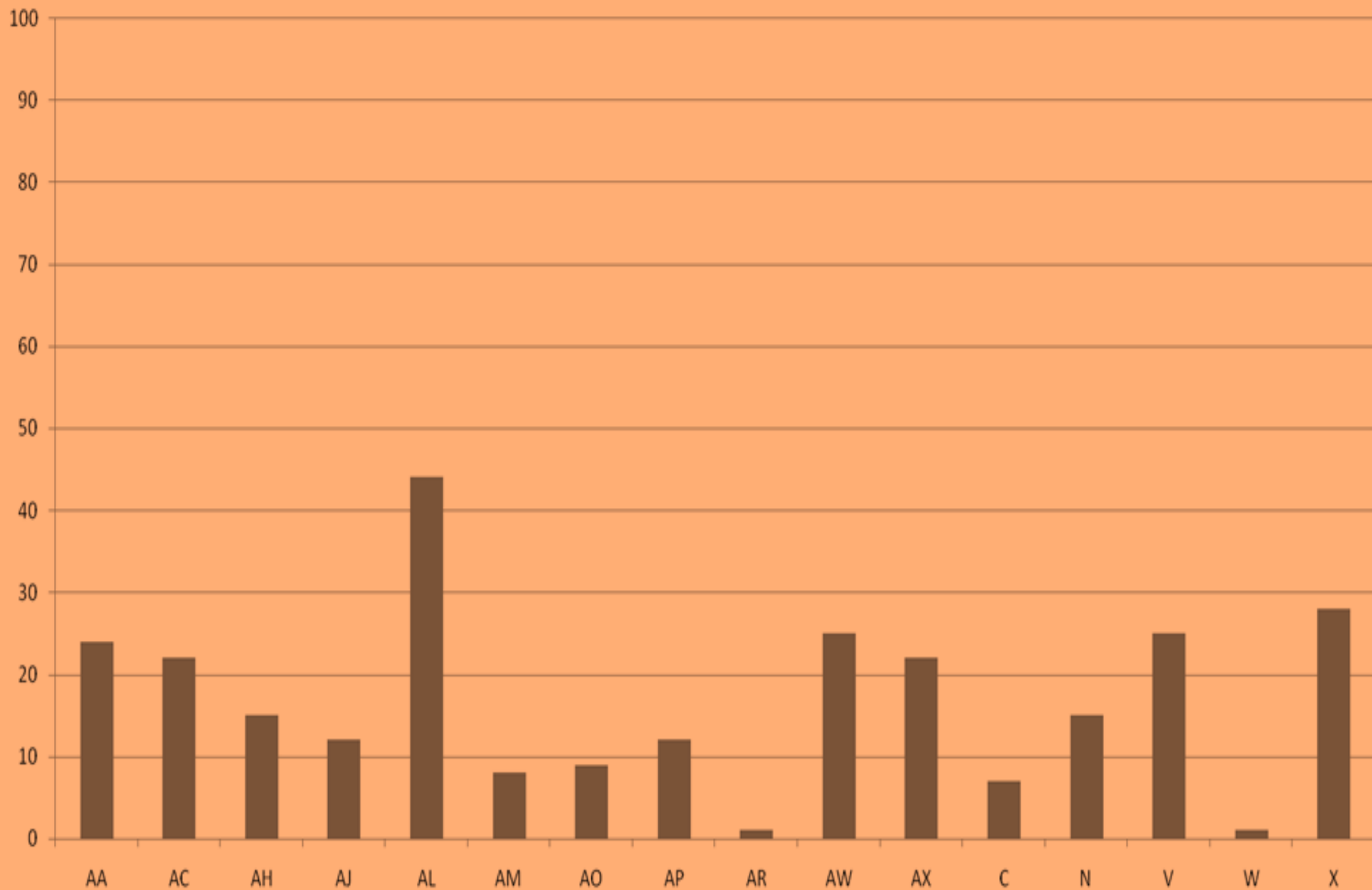
Total Units of Service



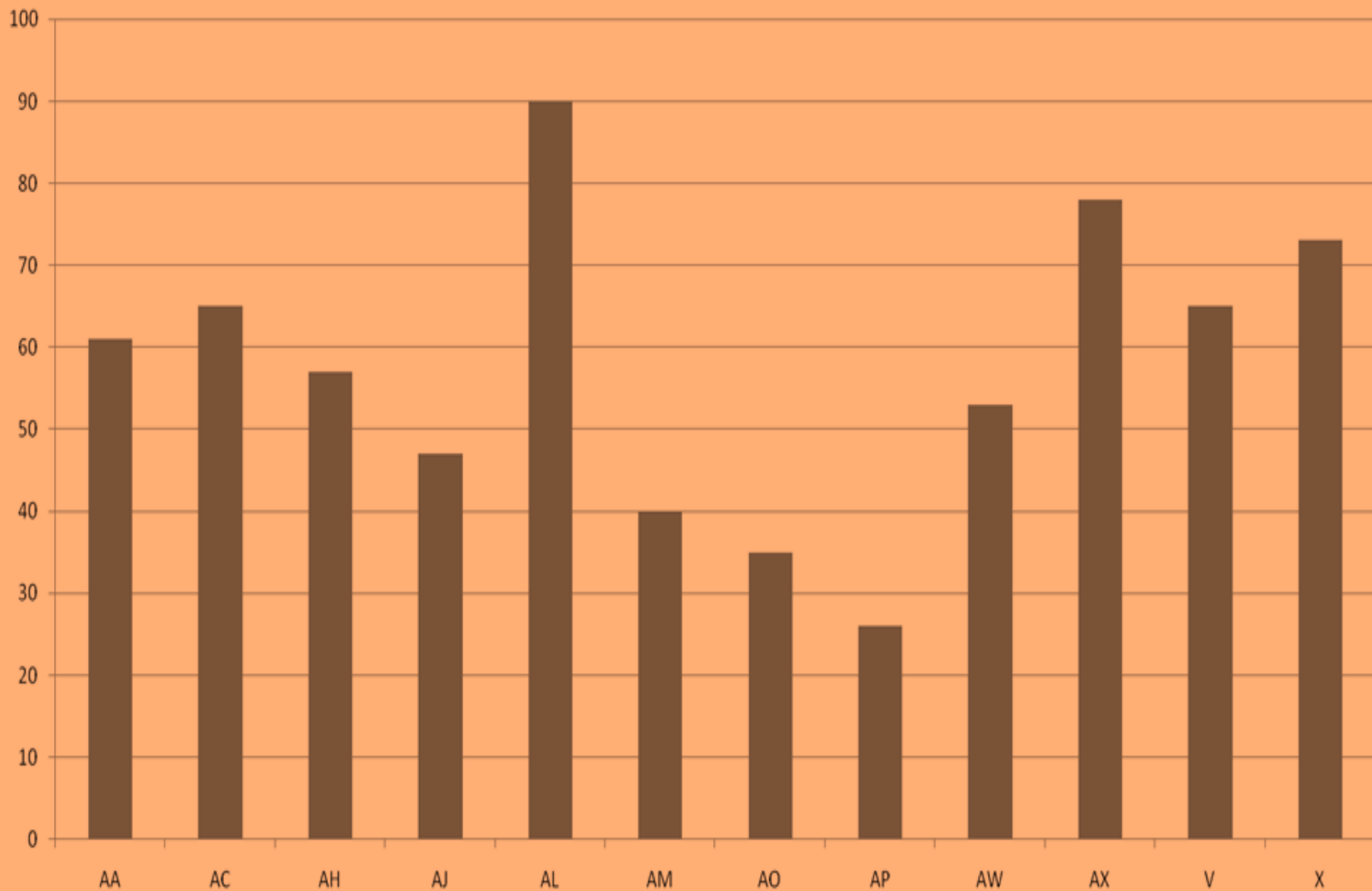
% With Arrests



% Ever Hospitalized for MI

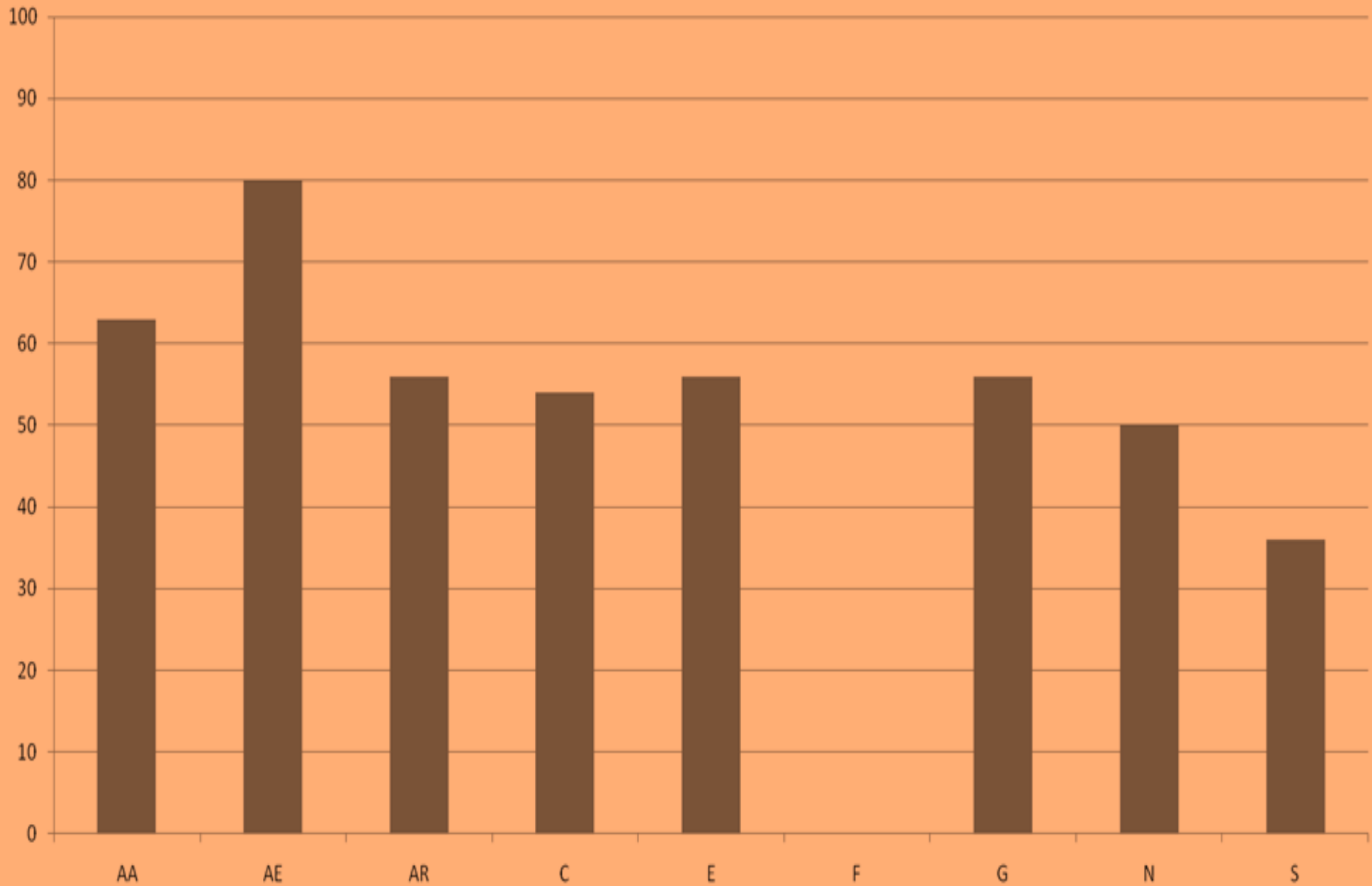


% Ever treated for MI

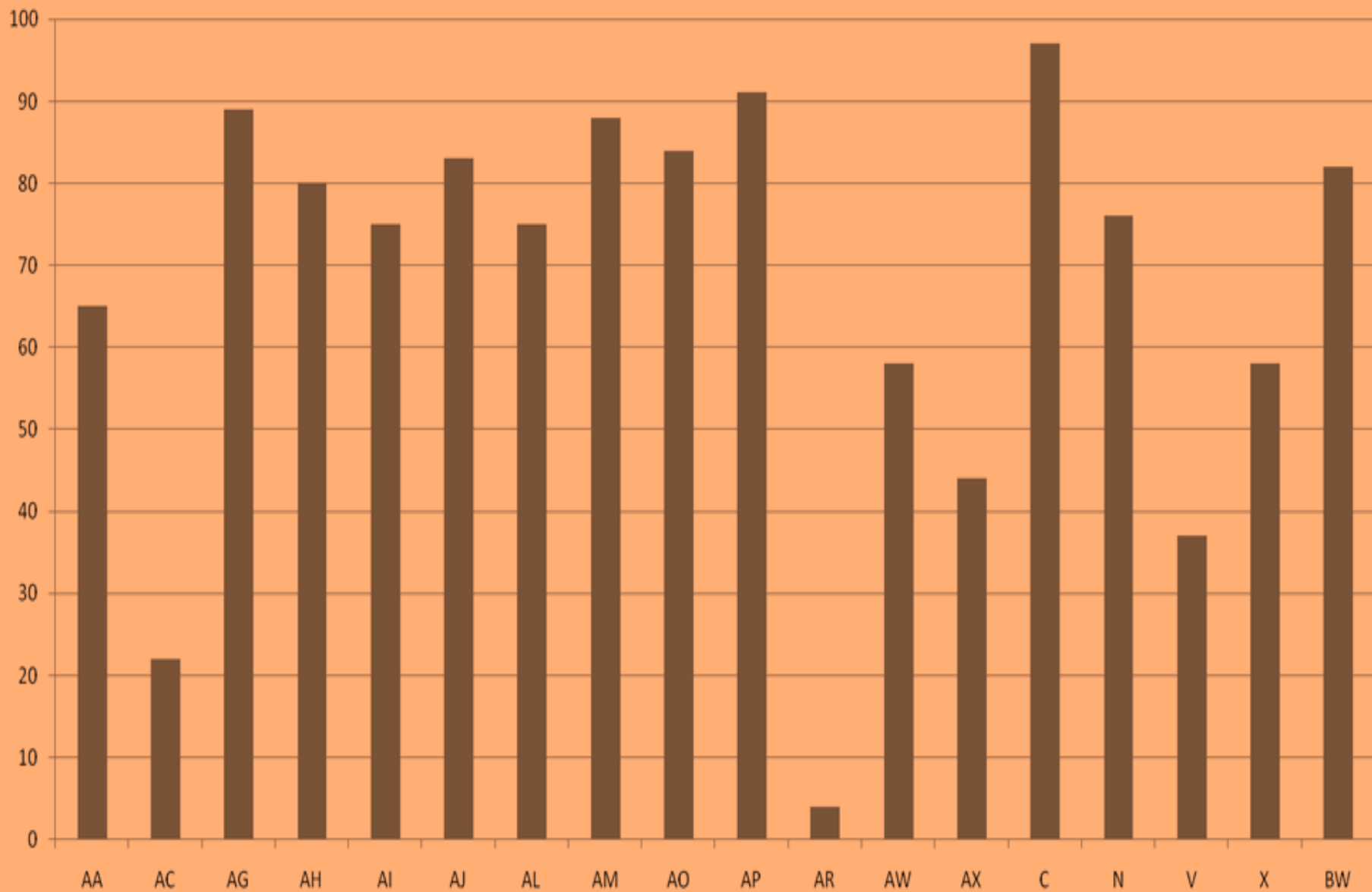


2008 Provider Metrics

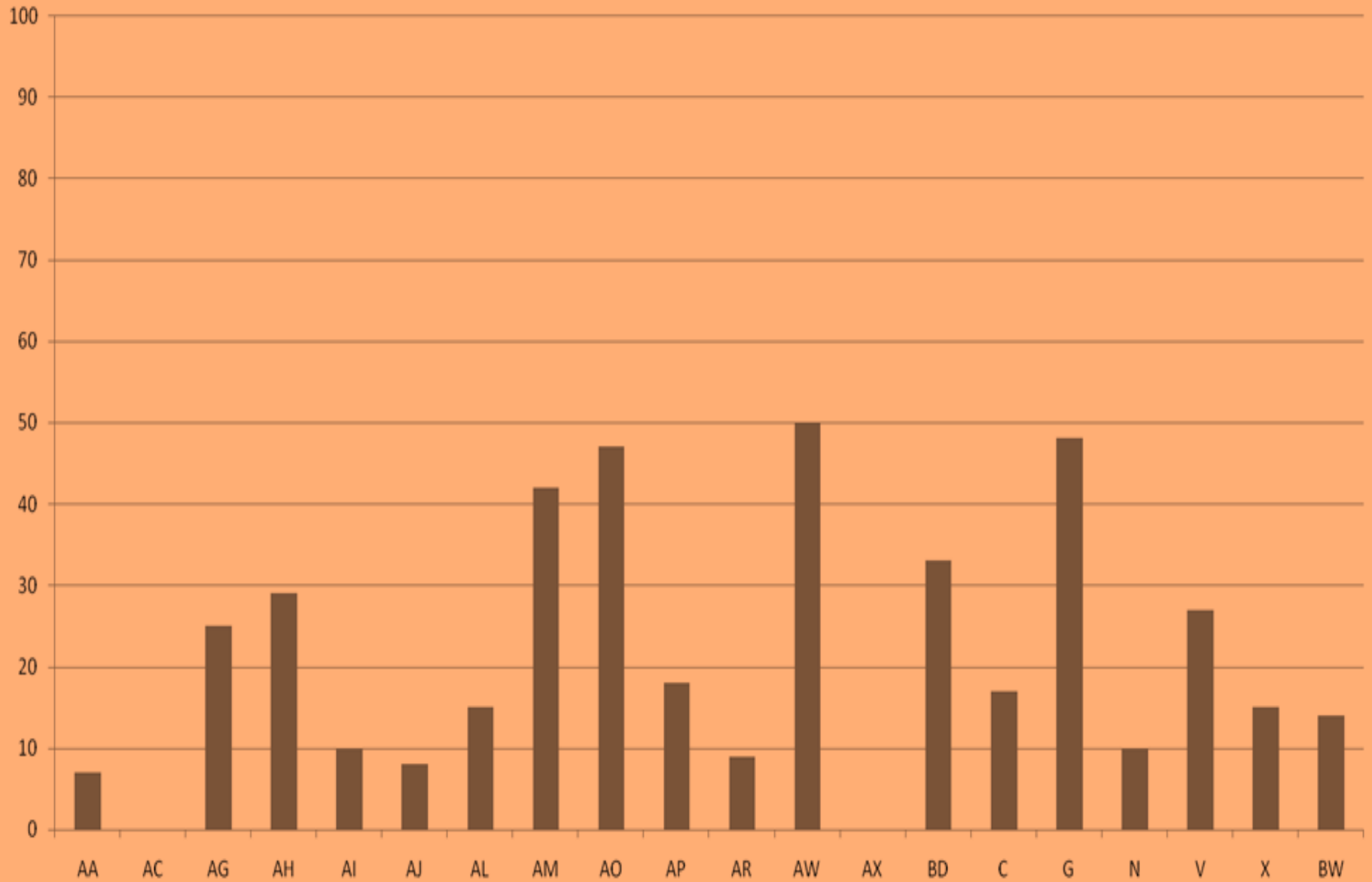
% Who Report Improvement in QOLSA



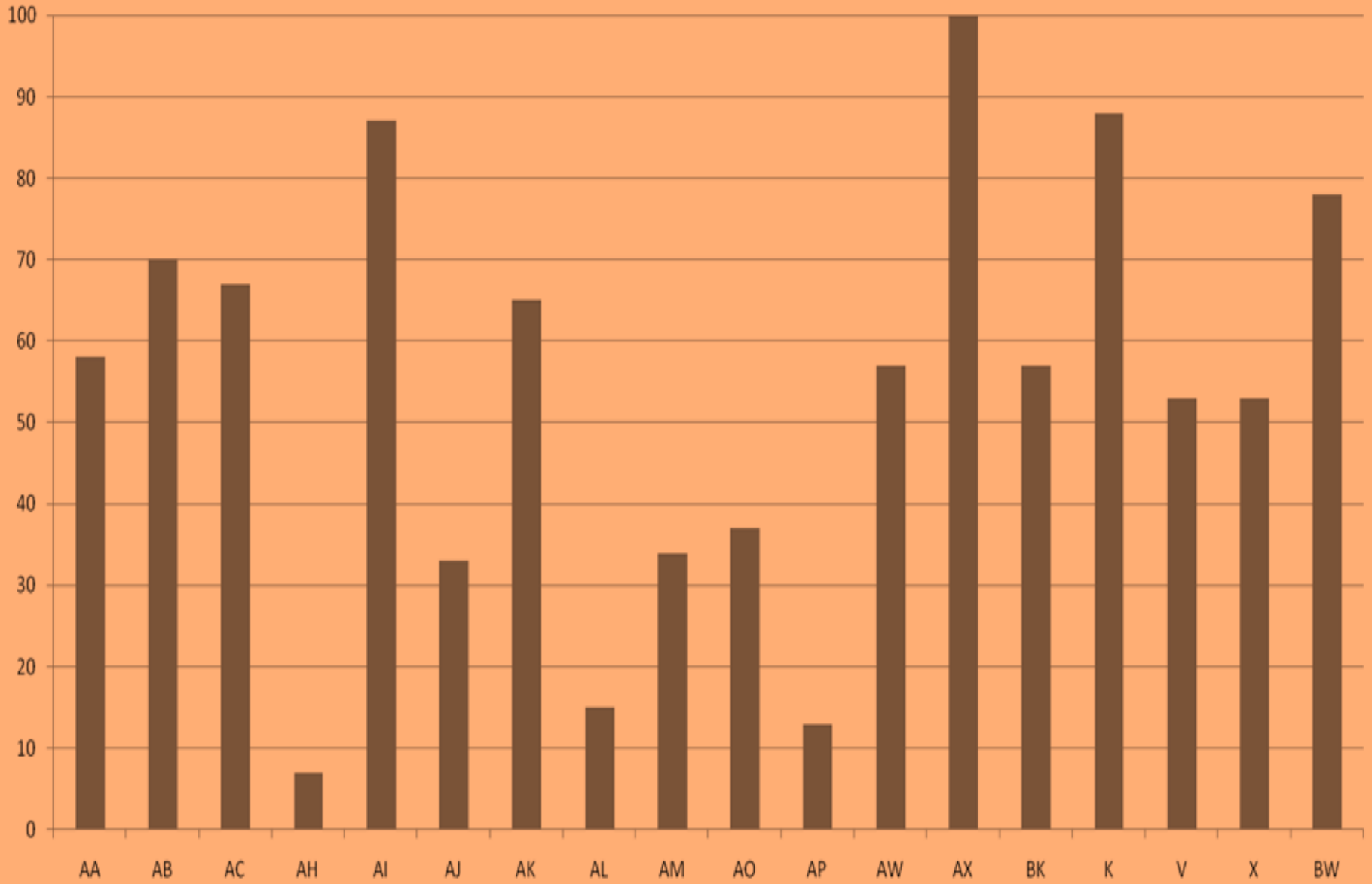
% Living Independently



% Competitively Employed



% Treatment Goals Achieved



2008 Average/Quarter All Reporting Programs (n=30)

